

## RL709-12V DC Latching Relay 100A

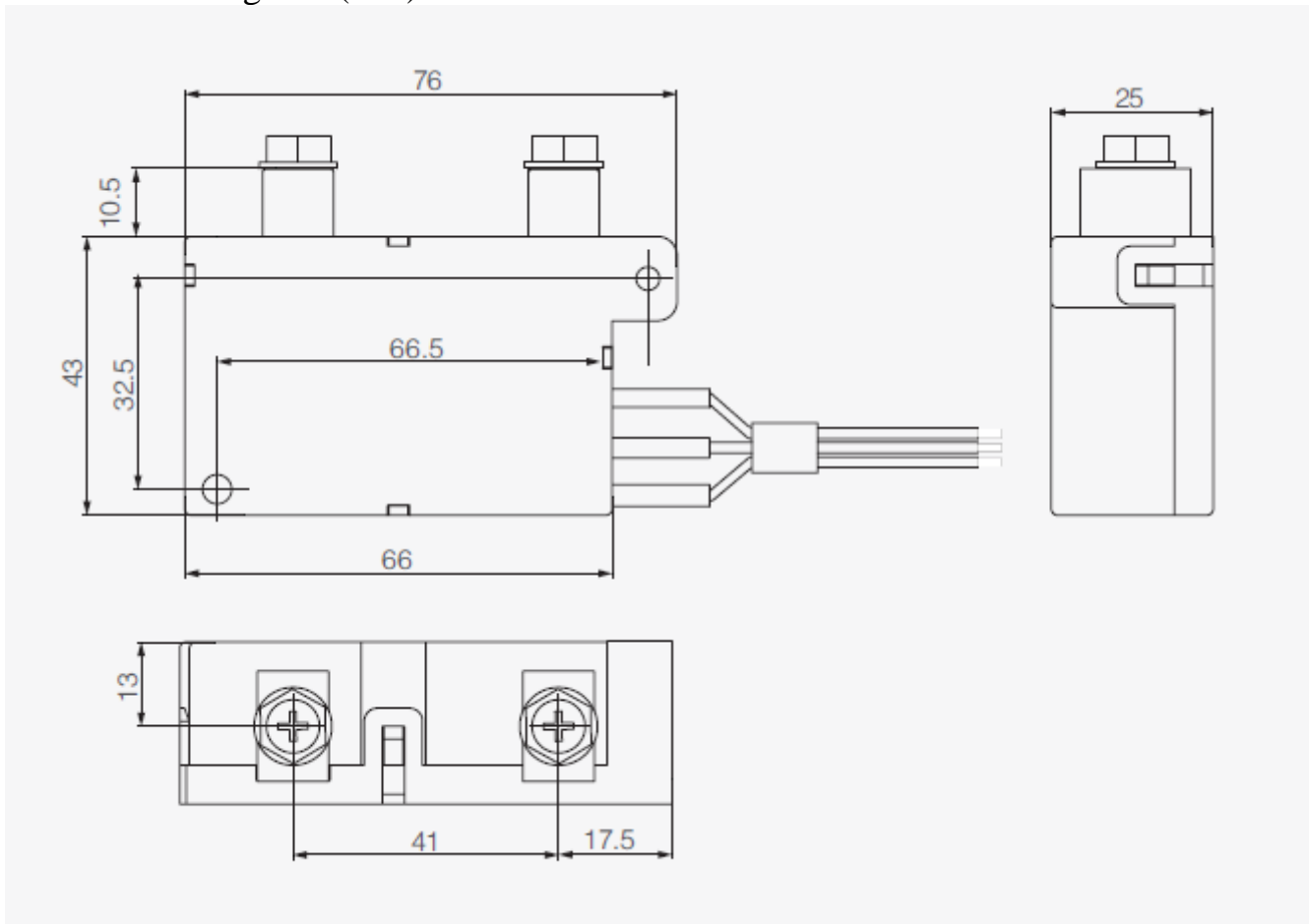
Model name	RL709 - 12V	<ul style="list-style-type: none"> <li>➤ 120A switching capability (250VAC)</li> <li>➤ Low coil consumption, ultra-low temperature rise.</li> <li>➤ Low contact resistance.</li> <li>➤ Strong anti-shock and anti-vibration capability.</li> </ul>
Insulation resistance	1000MΩ	500VDC
Dielectric Strength	Between Coil & Contacts	4000VAC 1min
	Between Open Contacts	1800VAC 1 min
Operate Time	30msec. Max.	
Release Time	30msec. Max.	
Contact Data	Contact form	1A/1B
	Contact material	AgSnO2
	Contact resistance	Max.:1.0 mΩ
	Contact Rating	120A 250VAC
	Max. Switching Power	30000VA
	Mechanical life	5×10 <sup>5</sup>
	Electrical life	6×10 <sup>3</sup>
Coil power	3.6W	Double coil
Coil Data	Rated Voltage	12 V DC
	Pick-up voltage	9 V DC
	Pulse Duration	100 ms
	Coil Resistance	2×40 Ω ±10%
Shock resistance	Functional	100m/S <sup>2</sup> (10g)
	Destructive	1000m/S <sup>2</sup> (100g)
Vibration resistance	10~55Hz 1.5mm	
Humidity	98%RH ,40°C	
Ambient temperature	-40~+70°C	
Termination	Fast connection	
Construction	Dust protected	
Outline size	L * W * T	76.0 x 43.0 x 25.0 mm
Unit weight	0,180 kg	Kilograms (tolerance +/- 1g)

Type marking Information:

① ② ③  
RL 709 - 12 V

- ① Latching Relay
- ② Part Number
- ③ Coil Voltage

## Dimensions Diagram (mm)



## Circuit Diagram

